



Mine wall
structure:
Safe

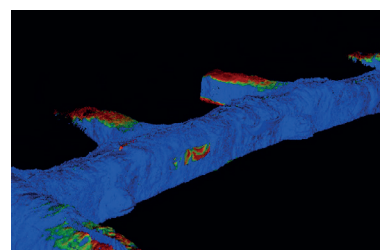
GeoSLAM Convergence Analysis

Overview

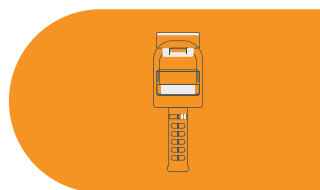
Combining hardware and advanced SLAM, GeoSLAM Convergence Analysis provides mine operators a quick and safe solution to analyse the change of rock movement, highlighting potential slope/rockface instability.

An operator can capture data in dangerous areas much faster than previously possible, making it easier to repeat scans. Greater amounts of information is available and due to the ease of capture, cost effectiveness and frequent scanning, decisions can be made faster, saving time, money and increasing safety.

Exported data can be used in existing mining software such as Deswik and Micromine, meaning it can be analysed using software that is already familiar to the team.



How it works?



Capture

Safely and easily scan mine tunnels, with or without control points



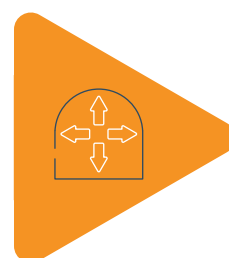
Process

Transfer the data to a computer - GeoSLAM Connect carries out automatic data processing



View

View your processed 3D data minutes. Export your data in your preferred format



Manage

Your 3D dataset can be used to analyse time based tunnel displacements in a wide range of mining software