



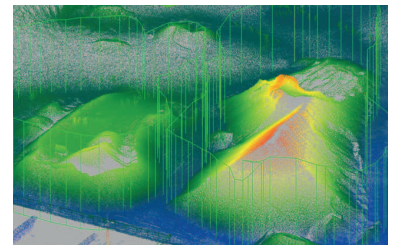
# GeoSLAM Volumes

## Overview

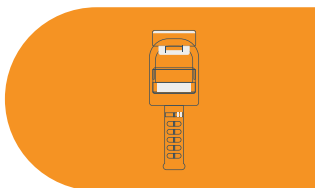
With GeoSLAM Volumes, mine operators can calculate stockpile tonnage within a few minutes, and monitor change over time, quickly and easily.

Handheld laser scanners can determine accurate stockpile volumes, silo reserves or mining tempos, without the need for GPS. Walk and scan, or attach the scanner to a trolley, drone, pole, UAV or vehicle for remote monitoring of hazardous environments. GeoSLAMs volumes software instantly turns data into actionable 3D information for rapid real-time decision making.

Confidently verify volumes at all stages of the supply chain as frequently as necessary, train staff in minutes, slash survey times and drive down costs.



## How it works?



### Capture

Easily walk around the perimeter or fly a UAV over a stockpile



### Process

Automatically process the data using GeoSLAM Connect, and load the data to GeoSLAMs Volumes software



### View

Define the boundaries, floor, enter the bulk factor and specific gravity to view volume



### Manage

Generate volumes reports as and when you need them