

Copyright

GeoSLAM Viewer User Guide © 2017 GeoSLAM Ltd.

All rights reserved.

# Version 1.0.0



## CONTENTS

1.	Introduction .....	4
2.	Installation .....	5
3.	Importing Data .....	7
4.	Viewing Data .....	9
4.1	2D Mode.....	9
4.2	3D Mode.....	10
5.	SETUP page .....	11
5.1	Changing the Data Folder location .....	11
5.2	Advanced options .....	11

## 1. INTRODUCTION

This guide describes how to install and use GeoSLAM Viewer, the free results file viewer for ZEB1 and ZEB-REVO data processed using GeoSLAM Desktop Software.

GeoSLAM Viewer can be installed alongside GeoSLAM Desktop to enable processed data to be viewed without having to use the GeoSLAM Desktop license dongle.

The Viewer can also be distributed and installed on other machines and used to display results files. In this instance the results folder must be imported prior to viewing.

## 2. INSTALLATION

To install GeoSLAM simply double click the *GeoSLAM Viewer Setup 1.x.x.exe* file. The application will automatically install. The setup procedure will present the GeoSLAM End User License Agreement (Figure 2-1). It is necessary to accept the license agreement in order to proceed with the installation. To accept the agreement, scroll to the end and click the *I Agree* button.

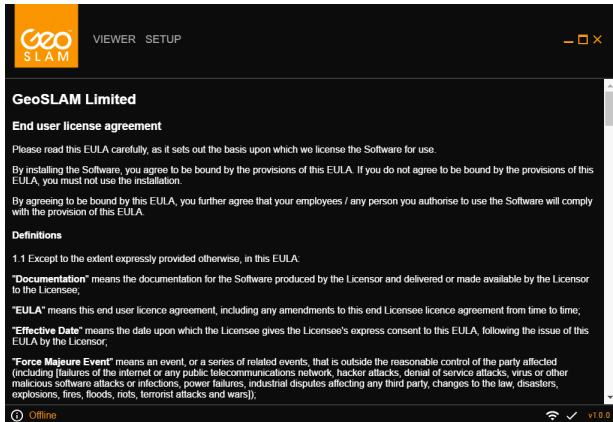


Figure 2-1

The Viewer application is now installed. The screen shown in Figure 2-2 is displayed.

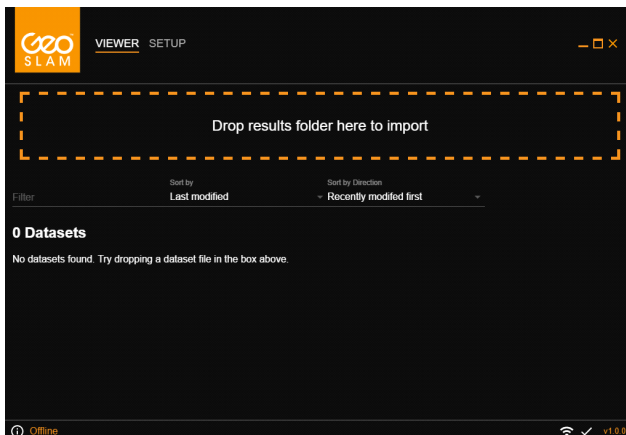


Figure 2-2

If GeoSLAM Desktop is already installed on the host machine and the default processing folder location has been used then any pre-existing processed data sets will be listed. Data can be viewed in the same manner as when using the GeoSLAM Desktop application (see Section 4 for further information).

If the Viewer has been installed on a machine without GeoSLAM Desktop already installed the Viewer list will be empty as shown in Figure 2-2. It is necessary to import processed data results folders into the Viewer application in order to make them available for viewing. Importing data is described in the next section.

### 3. IMPORTING DATA

To import data into GeoSLAM Viewer simply drag and drop the results folder from a previously processed ZEB data set processed using GeoSLAM Desktop in to the zone labelled *Drop results folder here to import*. The results folder will be copied to the viewer's data folder. Once copied the data set name and 2D floorplan preview will be listed on the Viewer main page as shown in Figure 3-1. The data set is now available for viewing. Viewing the data is described in the next section.

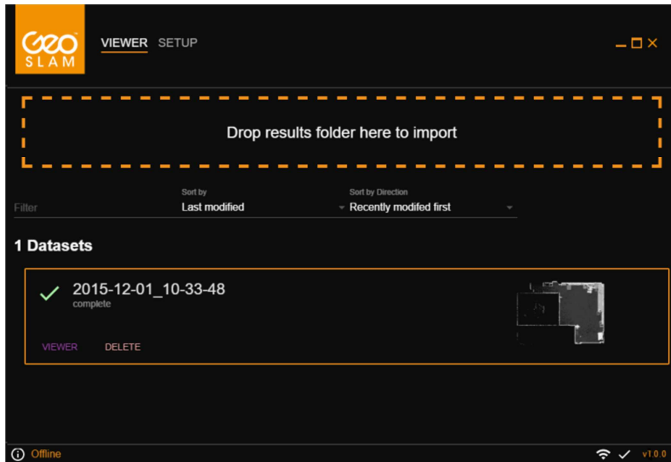


Figure 3-1

**Warning!** Editing the contents or renaming the results folder prior to import into GeoSLAM Viewer may lead to problems displaying the data.

Drop results folder here to import

Filter Sort by Last modified Sort by Direction Recently modified first

### 0 Datasets

No datasets found. Try dropping a dataset file in the box above.



## 4. VIEWING DATA

To view a data set, simply click the *VIEWER* button below the filename to be viewed (see Figure 4-1). A new window will open with a 2D floorplan representation of the data set.

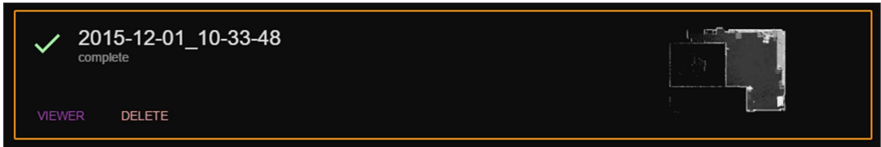


Figure 4-1

The GeoSLAM Viewer has two modes, 2D and 3D.

### 4.1 2D MODE

In 2D mode (Figure 4-2) an image of a horizontal slice from the point cloud at the height of the trajectory (floor plan) is presented. If multiple floors have been detected an image for is floor is presented. The user can cycle through the floors by clicking the + / - buttons in the top right corner of the display.

If a ZEB-CAM video file has been processed with the ZEB data, when the user clicks in the 2D view, images from the video file that are facing that point are displayed and the corresponding camera positions are displayed on the trajectory in the 2D view. The user can select a camera view and either drag it along the trajectory to see snapshots from video or double click to show/play the video from that camera position.

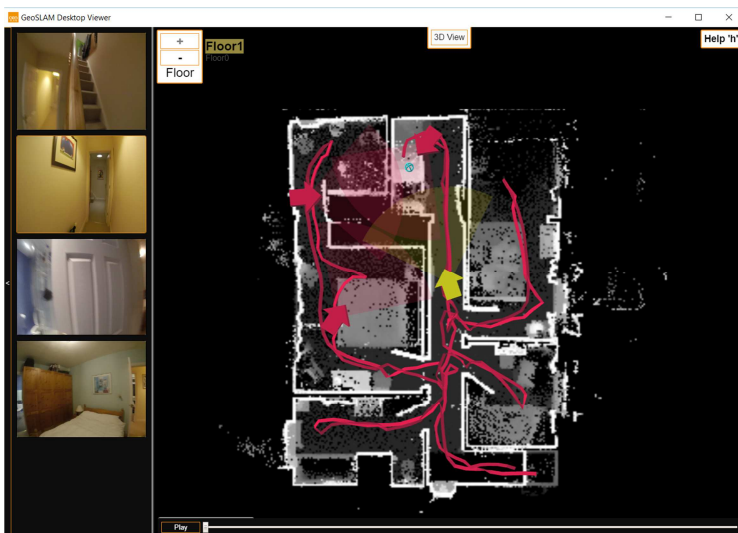


Figure 4-2

## 4.2 3D MODE

The user can switch to 3D mode by clicking the 3D View button at the top of the 2D display (or press the Tab key). The file displayed is the ply file you selected clicked the Enable Viewer checkbox. Depending on the size of the 3D file the 3D view may take some seconds to load.

The easiest way to navigate in the 3D view is to press the P key to lock the mouse and then use the keyboard arrow keys to zoom in and out and the mouse to turn left/right.

Press the H key to open the Navigation Help menu.

The following keys can also be used:

B – Toggles background colour from black to white

M – Cycles point size through 4 point sizes

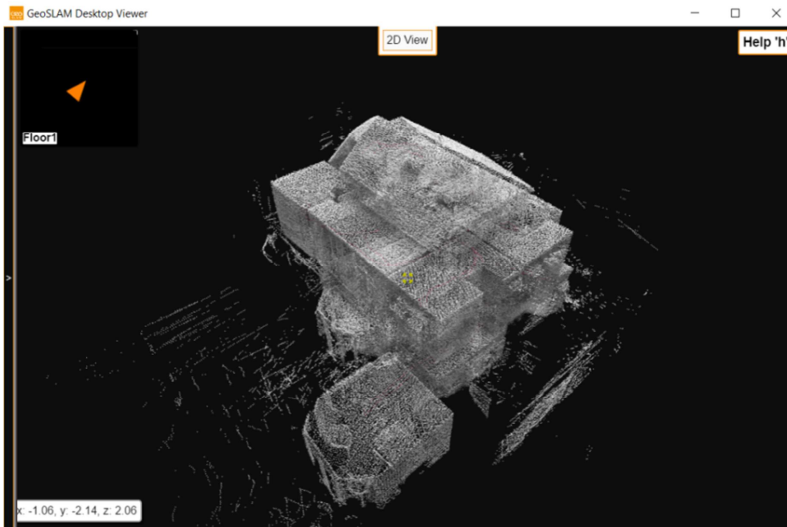


Figure 4-2

## 5. SETUP PAGE

### 5.1 CHANGING THE DATA FOLDER LOCATION

The default location used to store the data for the Viewer application is:

C:\Users\*<username>*\geoslam processing

This is the same location as that used by GeoSLAM Desktop for processing data sets.

The location can be changed by switching to the SETUP page and clicking the SET DATA FOLDER button (see Figure 5-1). Click OK to the information dialogue box and navigate to the file location you want GeoSLAM Viewer to store and access data sets for viewing.

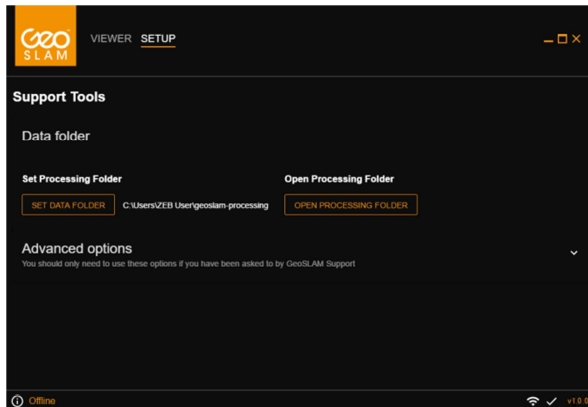


Figure 5-1

**Note:** Changing the Viewer Data Folder location does not change the GeoSLAM Desktop processing folder.

### 5.2 ADVANCED OPTIONS

The Advanced Options should only be used if requested by the GeoSLAM Support team.