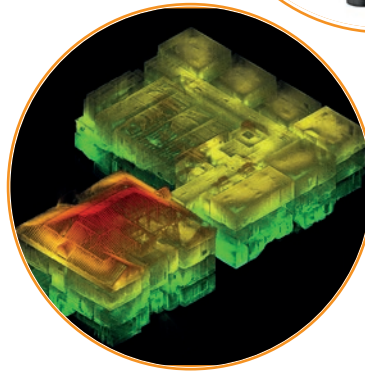


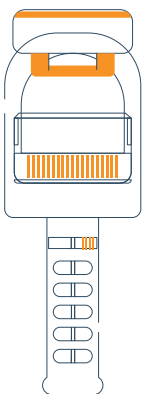
Scan to BIM Overview

GeoSLAM Hub & Draw is a comprehensive software suite that transforms **3D point cloud data** into actionable information and valuable deliverables.

A part of GeoSLAM's complete **mobile mapping solution**, GeoSLAM Hub & Draw bring together industry-leading SLAM with powerful post processing functionality to deliver **complete end to end solutions**.



How Does It Work?



Collect data



Process the data in
GeoSLAM Hub and
Draw BIM



AUTODESK®
REVIT®

*Bought separately

Modelling in REVIT