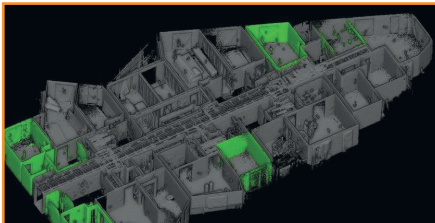
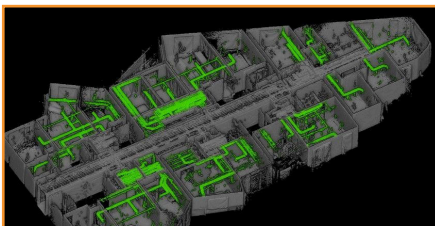


Scan 1: Reference Point Cloud



Scan 2: New Walls Constructed



Scan 3: New Pipework Installed

Construction Progress Overview

GeoSLAM **Construction Progress** combines hardware, advanced SLAM and analytics to deliver crucial site information to your teams quickly and easily in just **5 easy steps**.

Automatically generate clear progress reports with visualisations that show you the build progress made on site. It's used by construction companies to **track and record progress** against a 3D model or a previous scan to improve efficiency, save money, create unbiased progress reports and provide valuable data to help resolve any disputes that may arise.

How It Works



Capture

Using GeoSLAM's mobile mapping system, capture regular scans by walking around the site.



Process

Automatically process the data using our smart data platform, GeoSLAM Connect.



View

View your 3D data, see notes, voice notes or photos in minutes.



Create

An automatic PDF report will be generated and emailed to you, or saved in a file location of your choice.



Where next?

Sync the results of your project to your preferred collaboration tools.